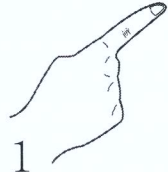


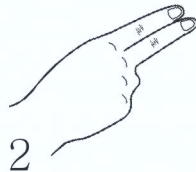
한국어 큐드 스피치 차트 (ver 3.5)

Korean Cued Speech Chart

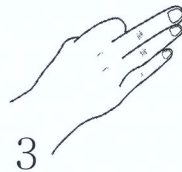
자음: 손모양(Handshapes)



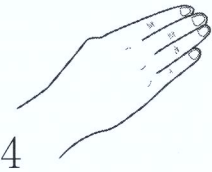
1
/ㄷ/:t, /ㅌ/:p



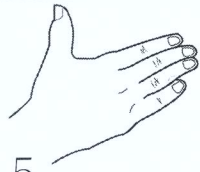
2
/ㅅ/:s^h, /ㅋ/:k^h



3
/ㄹ/:l



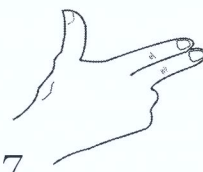
4
/ㅍ/:t^h, /ㅑ/:p^h
/ㅎ/:h



5
/ㅁ/:m,
초성 /ㅇ/, 모음만
(vowels)



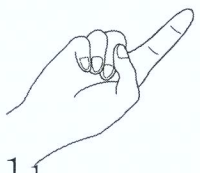
6
/ㄴ/:n



7
/ㄱ/:k,
/ㅈ/:ts



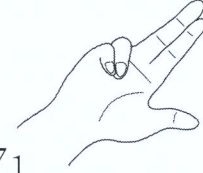
8
/ㅊ/:tsh
, 종성 /ㅇ/:ŋ



11
/ㄸ/:t', /ㅃ/:p'



21
/ㅆ/:s'



71
/ㄱ':k', /ㅈ':ts'

모음: 위치(Placement)



입(MOUTH)

/ㅏ/:a, /ㅑ/:i,
/ㅓ/:e



턱(CHIN)

/ㅞ/:we,
/ㅟ/:o



목(THROAT)

/ㅠ/:ε, /ㅡ/:yu



옆 고정 (SIDE)

자음만 발성
(consonant),
종성 받침: coda



옆 앞
(SIDE FORWARD)

/ㅑ/:a, /ㅓ/:ø,
/ㅕ/:wi



옆 아래
(SIDE DOWN)

/ㅟ/:w, /ㅢ/:u,
/ㅝ/:we



턱 아래
(CHIN DOWN)

/ㅟ/:ya, /ㅑ/:wa,
/ㅟ/:yo, /ㅡ/:ye



옆 목
(SIDE THROAT)

/ㅟ/:wy, /ㅑ/:yλ,
/ㅟ/:wλ, /ㅡ/:ye